



# Bamboo pillow-top Mattress

[Read More](#)

**SKU:** 1700006088  
**Price:** \$299.00 - \$499.00  
**Stock:** instock  
**Categories:** [All products](#), [Double - Full](#), [King](#), [Pillowtop Mattress](#), [Queen](#), [Single - Twin](#)  
**Tags:** [bamboo](#), [bed](#), [Eurotop](#), [Foam](#), [mattress](#), [pillowtop](#), [queen](#), [thick](#)

## Product Description

# BAMBOO PILLOW-TOP

This luxury pillow top is engineered guarantee the quality of your sleep. Finely crafted with the best quality pillow top foam, 13 gauge innerspring along with our premium knitted fabric to not only provide you with the best support, but to allow increased breath-ability. Our pillow top mattress has the perfect firmness between soft and firm.

**FIRMNESS LEVEL (1-10)**

MODEL	1-SOFT 10 BEING HARD
Hybrid Plush Mattress	7 out of 10 MEDIUM FIRM

## Dimensions Width x Length

Twin-Single	38 x 74 ½"	96.5 x 189 cm
Double-Full	53 x 74 ½"	134.5 x 189 cm
Queen	60 x 79 ½"	152.5 x 202 cm
King	76 x 79 ½"	193 x 202 cm

**Mattress type** - Coil + High Density Foam+ Pillow top layer+ Bamboo knitted fabric **Sizes** - Single(Twin) ,Double(Full), Queen ,King **Thickness** - 10 inch **Warranty** - 5 year manufacturer limited warranty.  
**Packaging** - Box packaging **Shipping** - standard shipping from Vancouver to all Canadian provinces. **Delivery** - 2 to 5 days depends on the location. If you looking for a high quality mattress that can last you a long time with a comfortable bedding look no further

From - <http://www.shapesmattress.com>



# Tight-top Mattress - 7 inch

[Read More](#)

**SKU:** 1700006149  
**Price:** \$169.00 - \$399.00  
**Stock:** instock  
**Categories:** [All products](#), [Bed Room](#), [Double - Full](#), [Queen](#), [Single - Twin](#), [Tighttop Mattress](#)  
**Tags:** [double](#), [mattress](#), [queen](#), [rv](#), [single](#), [thin](#), [tighttop](#)

## Product Description

# Tight-top model - 6 Inch

This tight top plush mattress is part of our Shapes collection. Finely crafted with high density foam, 13 gauge innerspring, and premium knitted fabric engineered for a better sleep. This mattress provides the best support for those who fancies a mattress on the firmer side. **FIRMNESS LEVEL (1-10)**

**Model** 1(being soft)- 10(being hard)

Tight top Mattress 8 out of 10

**MEDIUM FIRM**

### Dimensions

#### Width x Length

Twin/Single	38 x 74 ½"	96.5 x 189 cm
Double/Full	53 x 74 ½"	134.5 x 189 cm
Queen	60 x 79 ½"	152.5 x 202 cm

**Mattress type** - Coil + High Density Foam **Sizes** - Single-Twin , Double-Full , Queen **Thickness** - 6 inches **Warranty** - 5 year manufacturer limited warranty. **Packaging** - Box packaging **Shipping** - standard shipping from Vancouver to all Canadian provinces. **Delivery** - 2 to 5 days depends on the location. If you looking for a high quality mattress that can last you a long time with a comfortable bedding look no further

From - <http://www.shapesmattress.com>



# Caseros Bed frame - Grey velvet- Charcoal grey - Double & single size

[Read More](#)

**SKU:** 1700007280

**Price:** \$225.00 - \$289.00

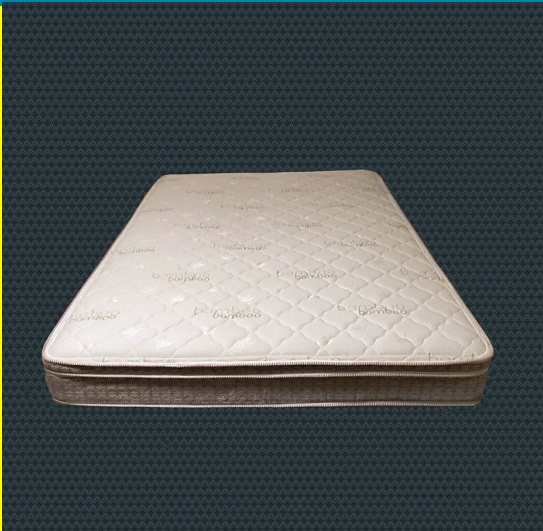
**Stock:** instock

**Categories:** [All products](#), [Bed Room](#), [Bed Frames](#)

**Tags:** [adon](#), [base](#), [bed](#), [box](#), [box spring](#), [double](#), [Frame](#), [king](#), [legs](#), [mattress](#), [metal frame](#), [queen](#), [single](#), [spring](#)

## Product Description

**Description** Caseros bed frame is a beautiful structured Upholstered bed frame that fits any space and matches any room design. The fabric is very smooth to touch and the string build makes the frame the best ad on to your bedroom for a long time. option to add LED lights to footboard base as in third picture **Size available** - single, Double **Material** - Velvet Grey **Package** - 1 Box **Installation** - required **Tools provided**



# 8' Firm- tight-top mattress + Coconut pad

[Read More](#)

**SKU:** 1700006094

**Price:** \$439.00 - \$849.00

**Stock:** instock

**Categories:** [All products](#), [Tighttop Mattress](#), [Local-Handmade mattress](#), [Single - Twin](#), [Double - Full](#), [Queen](#), [King bamboo](#), [bed](#), [Coconut](#), [double](#), [Firm](#), [full](#), [handmade](#), [Hard](#), [king](#), [local](#), [mattress](#), [pillowtop](#), [queen](#), [single](#), [spring](#), [thick](#), [tighttop](#)

**Tags:**

## Product Description

# LOCAL hand made -Firm Tight-top coconut coir mattress

Made with thick springs and high density foam makes this model an everlasting mattress that you always wanted. Tired of mattresses that sinks in the middle. This model will last you a lifetime without any issues. Providing with a strong base for right posture and healthy sleep. Each mattress is hand-made by professionals in Canada. ----*Option to add on Coconut pad layer beneath the top layer makes the mattress extra firm----* - **Local Hand Made in Canada -10 year manufacturer warranty**

**FIRMNESS LEVEL (1-10)**

**Model**      **1-soft 10 being hard**

Regular model      8 out of 10      **FIRM**

Coconut pad model 9.5 out of 10      **HARD**

**Thickness** - comes in 8 inch regular & 10 inch with coconut pad add on **Dimensions**

**Width x Length**

Twin-Single 38 x 74 ½"      96.5 x 189 cm      .

Double-Full 53 x 74 ½"      134.5 x 189 cm

Queen 60 x 79 ½"      152.5 x 202 cm

King 76 x 79 ½"      193 x 202 cm

**Mattress type** - Coil+coconut coir +high density foam **Sizes** - Single(Twin) ,Double(Full), Queen ,King

**Thickness** - 10 inch **Packaging** - Box packaging **Shipping** - Local pickup / delivery only - no shipping available currently **Delivery** - Local delivery only (Vancouver area) - 2 day delivery If you looking for a high quality mattress that can last you a long time with a comfortable bedding look no further

From - <http://www.shapesmattress.com>

If you looking for a high quality mattress that can last you a long time with a comfortable bedding look no further

From - <http://www.shapesmattress.com>



# Hybrid Plush Mattress

[Read More](#)

SKU:	1700006089
Price:	\$199.00 - \$419.00
Stock:	instock
Categories:	<a href="#">All products</a> , <a href="#">Tightop Mattress</a> , <a href="#">Single - Twin</a> , <a href="#">Double - Full</a> , <a href="#">Queen</a>
Tags:	<a href="#">8</a> , <a href="#">double</a> , <a href="#">inch</a> , <a href="#">kids</a> , <a href="#">mattress</a> , <a href="#">queen</a> , <a href="#">single</a> , <a href="#">tight</a> , <a href="#">top</a>

## Product Description

# Hybrid Plush Mattress

Introducing Our Hybrid Plush Mattress - The Epitome of Comfort and Quality Discover the ultimate in sleep comfort with our Hybrid Plush Mattress, a distinguished member of our prestigious Shapes collection. Crafted with meticulous attention to detail, this mattress combines the finest materials to create a truly exceptional sleeping experience. From high-density foam to a resilient 13-gauge innerspring system and premium knitted fabric, every element is designed to elevate your rest to new heights. With our Hybrid Plush Mattress, you'll not only wake up refreshed but also enjoy unparalleled support for your back, making it the perfect companion for a rejuvenating night's sleep

MODEL	1-SOFT 10 BEING HARD
Hybrid Plush Mattress	7.5 out of 10 MEDIUM FIRM

## Dimensions

	Width x Length
Twin-Single	38 x 74 ½" . 96.5 x 189 cm .
Double-Full	53 x 74 ½" 134.5 x 189 cm
Queen	60 x 79 ½" 152.5 x 202 cm
King	76 x 79 ½" 193 x 202 cm

**Mattress type** - Coil + High Density Foam **Sizes** - Single-Twin, Double-Full, Queen **Thickness** - 8 inch **Warranty** -Enjoy peace of mind with a generous 5-year manufacturer's limited warranty, a testament to the mattress's exceptional quality and durability. **Packaging** - Your mattress will be securely packaged in a box, ensuring its safe arrival and convenience. Enjoy peace of mind with a generous 5-year manufacturer's limited warranty, a testament to the mattress's exceptional quality and durability. **Shipping** - We are pleased to offer standard shipping from Vancouver to all Canadian provinces, making it accessible to customers nationwide. **Delivery** -Your order will be delivered within 2 to 5 days, depending on your location. We are committed to ensuring that you receive your Hybrid Plush Mattress swiftly and hassle-free. The Hybrid Plush Mattress is not just a mattress; it's a gateway to a world of unparalleled sleep quality. With our mattress, you're investing in your well-being, ensuring restful nights and rejuvenated mornings. Experience the difference that premium materials and expert craftsmanship can make in your sleep routine. Our mattress is designed to offer:

1. Optimal Support: Thanks to the 7.5 firmness rating, our Hybrid Plush Mattress provides a balanced blend of support and comfort. This medium-firm mattress is perfect for individuals seeking a mattress that caters to their specific sleep preferences.
2. Durability: With a 5-year warranty, you can trust that your investment in our Hybrid Plush Mattress is protected. It's built to stand the test of time, ensuring lasting comfort and quality.
3. Convenience: The mattress is available in various sizes, including Single-Twin, Double-Full, and Queen, ensuring that it's suitable for various bed frames and room sizes.
4. Easy Setup: Our mattress arrives securely packaged in a box, making setup a breeze. You'll have your new mattress in place in no time.



5. **Fast Delivery:** We understand that quality sleep can't wait. Our swift 2 to 5-day delivery ensures that you can start enjoying the benefits of the Hybrid Plush Mattress without delay.

At Furniture Garage Store, we're committed to providing the best sleep solutions for our customers. If you're in search of a high-quality mattress that promises both longevity and luxurious comfort, your quest ends here. Explore the world of blissful sleep and quality bedding at [\[shapemattress.com\]](#). Enhance your sleep, enhance your life, and discover the difference a Hybrid Plush Mattress can make.



## FG Combo 1 ( Pillow Top Mattress + Box Spring)

[Read More](#)

SKU:	1700006011
Price:	\$268.00 - \$499.99
Stock:	instock
Categories:	<a href="#">All products</a> , <a href="#">Bed Room</a> , <a href="#">Bedroom combo</a> , <a href="#">Mattress</a>
Tags:	<a href="#">box spring</a> , <a href="#">FG Combo 1</a> , <a href="#">mattress</a>

### Product Description

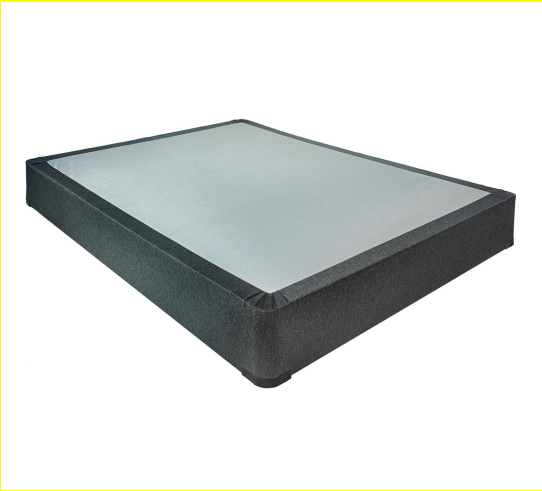
#### Mattress Information

**Mattress type** - Coil + High Density Foam+ Pillow top layer+ Bamboo knitted fabric **Sizes** - Single(Twin) ,Double(Full), Queen ,King **Thickness** - 10 inch **Warranty** - 5 year **manufacturer limited warranty**. **Packaging** - Box packaging **Shipping** - standard shipping from Vancouver to all Canadian provinces. **Delivery** - 2 to 5 days depends on the location. <https://www.furnituregarage.ca/product/shapes-pillowtop-mattress/>

#### Box Spring Information

- Strong and Steady build box spring with choice to add legs on to make it more stable and give more height eliminating the need of bed frames entirely
- Made in Canada
- Pre-assembled
- Sizes available-single,double,queen,king

<https://www.furnituregarage.ca/product/box-spring-single-double-queen-king-sizes/>



## Box spring - Single-Double-Queen-King

[Read More](#)

SKU:	1700004210
Price:	\$119.00 - \$199.00
Stock:	instock
Categories:	<a href="#">All products</a> , <a href="#">Base</a> , <a href="#">Local-Handmade mattress</a>
Tags:	<a href="#">adon</a> , <a href="#">base</a> , <a href="#">bed</a> , <a href="#">box</a> , <a href="#">box spring</a> , <a href="#">double</a> , <a href="#">king</a> , <a href="#">legs</a> , <a href="#">mattress</a> , <a href="#">metal frame</a> , <a href="#">queen</a> , <a href="#">single</a> , <a href="#">spring</a>

Product Description

Description

- Strong and Steady build box spring with choice to add legs on to make it more stable and give more height eliminating the need of bed frames entirely
- Made in Canada
- Pre-assembled
- Sizes available-single,double,queen,king ( inquire via email for custom sizes)

Height - 7 inch

Dimentions

Twin/Single		38 x 74 ½"	96.5 x 189 cm
Double/Full	53 x 74 ½"	134.5 x 189 cm	Also known as "Standard"
Queen	60 x 79 ½"		152.5 x 202 cm
King	76 x 79 ½"	193 x 202 cm	Standard Canadian & American King



Organic Cotton Pocket Coil Mattress

[Read More](#)

**SKU:** 1700008008  
**Price:** \$549.00 - \$999.00  
**Stock:** instock  
**Categories:** [King](#), [Pillowtop Mattress](#), [Queen](#)  
**Tags:** [bed](#), [Eurotop](#), [Foam](#), [mattress](#), [queen](#), [thick](#)

Product Description

Organic Cotton Pocket Coil Mattress

Experience unparalleled luxury with Shapes Organic Cotton Pocket Coil Mattress. Crafted with high-density foam and motion isolation technology, this 13-inch thick mattress offers firm support and ultimate comfort. Available in double, queen, and king sizes, it embodies superior quality and organic materials for a restful, rejuvenating sleep.

FIRMNESS LEVEL (1-10)			
MODEL	1-SOFT 10 BEING HARD		
Organic Cotton Pocket Coil Mattress	7 out of 10	MEDIUM FIRM	
Dimensions			
Width x Length			
Twin-Single	38 x 74 ½"	96.5 x 189 cm	
Double-Full	53 x 74 ½"	134.5 x 189 cm	
Queen	60 x 79 ½"	152.5 x 202 cm	
King	76 x 79 ½"	193 x 202 cm	

**Mattress type** - Pocket Coil + High Density Foam+ Euro top layer + Motion Isolating **Sizes** - Double, Queen, King **Thickness** - 13 inch **Warranty** - 5 year manufacturer limited warranty. **Packaging** - Box packaging **Shipping** - standard shipping from Vancouver to all Canadian provinces. **Delivery** - 2 to 5 days depends on the location. If you looking for a high quality mattress that can last you a long time with a comfortable bedding look no further

From - <http://www.shapesmattress.com>



# Deluxe Pocket Coil Firm Mattress

[Read More](#)

**SKU:** 1700007997  
**Price:** \$749.00 - \$999.00  
**Stock:** instock  
**Categories:** [King](#), [Pillowtop Mattress](#), [Queen](#)  
**Tags:** [bed](#), [Eurotop](#), [Foam](#), [mattress](#), [queen](#), [thick](#)

## Product Description

# Deluxe Pocket Coil Mattress

Shapes introduces the Deluxe Pocket Coil Mattress, epitomizing luxury and support. Crafted with premium materials, its firmness ensures unparalleled comfort and spinal alignment. Available in queen and king sizes, this high-quality mattress guarantees a rejuvenating night's sleep, promising durability and restorative rest.

### FIRMNESS LEVEL (1-10)

MODEL	1-SOFT	10 BEING HARD
Hybrid Plush Mattress	8	out of 10 FIRM

### Dimensions

	Width x Length	
Twin-Single	38 x 74 ½"	96.5 x 189 cm
Double-Full	53 x 74 ½"	134.5 x 189 cm
Queen	60 x 79 ½"	152.5 x 202 cm
King	76 x 79 ½"	193 x 202 cm

**Mattress type** - Pocket Coil + High Density Foam+ Euro top layer + Motion Isolating **Sizes** - Queen, King **Thickness** - 12 inch **Warranty** - 5 year manufacturer limited warranty. **Packaging** - Box packaging **Shipping** - standard shipping from Vancouver to all Canadian provinces. **Delivery** - 2 to 5 days depends on the location. If you looking for a high quality mattress that can last you a long time with a comfortable bedding look no further

From - <http://www.shapesmattress.com>