



## Tight-top Mattress - 7 inch

[Read More](#)

**SKU:** 1700006149

**Price:** \$169.00 - \$399.00

**Stock:** instock

**Categories:** [All products](#), [Bed Room](#), [Double - Full](#), [Queen](#), [Single - Twin](#), [Tighttop Mattress](#)

**Tags:** [double](#), [mattress](#), [queen](#), [rv](#), [single](#), [thin](#), [tighttop](#)

### Product Description

## Tight-top model - 6 Inch

This tight top plush mattress is part of our Shapes collection. Finely crafted with high density foam, 13 gauge innerspring, and premium knitted fabric engineered for a better sleep. This mattress provides the best support for those who fancies a mattress on the firmer side. **FIRMNESS LEVEL (1-10)**

**Model** 1(being soft)- 10(being hard)

Tight top Mattress 8 out of 10

**MEDIUM FIRM**

### Dimensions

#### Width x Length

|             |            |                |
|-------------|------------|----------------|
| Twin/Single | 38 x 74 ½" | 96.5 x 189 cm  |
| Double/Full | 53 x 74 ½" | 134.5 x 189 cm |
| Queen       | 60 x 79 ½" | 152.5 x 202 cm |

**Mattress type** - Coil + High Density Foam **Sizes** - Single-Twin , Double-Full , Queen **Thickness** - 6 inches **Warranty** - 5 year manufacturer limited warranty. **Packaging** - Box packaging **Shipping** - standard shipping from Vancouver to all Canadian provinces. **Delivery** - 2 to 5 days depends on the location. If you looking for a high quality mattress that can last you a long time with a comfortable bedding look no further

From - <http://www.shapesmattress.com>

## Hybrid Plush Mattress

[Read More](#)

**SKU:** 1700006089

**Price:** \$199.00 - \$419.00

**Stock:** instock

**Categories:** [All products](#), [Tighttop Mattress](#), [Single - Twin](#), [Double - Full](#), [Queen](#)

**Tags:** [8](#), [double](#), [inch](#), [kids](#), [mattress](#), [queen](#), [single](#), [tight](#), [top](#)

### Product Description

## Hybrid Plush Mattress

Introducing Our Hybrid Plush Mattress - The Epitome of Comfort and Quality Discover the ultimate in sleep comfort with our Hybrid Plush Mattress, a distinguished member of our prestigious Shapes collection. Crafted with meticulous attention to detail, this mattress combines the finest materials to create a truly exceptional

sleeping experience. From high-density foam to a resilient 13-gauge innerspring system and premium knitted fabric, every element is designed to elevate your rest to new heights. With our Hybrid Plush Mattress, you'll not only wake up refreshed but also enjoy unparalleled support for your back, making it the perfect companion for a rejuvenating night's sleep

**FIRMNESS LEVEL (1-10)**

| MODEL                 | 1-SOFT | 10 BEING HARD |
|-----------------------|--------|---------------|
| Hybrid Plush Mattress | 7.5    | out of 10     |
|                       |        | MEDIUM FIRM   |

Dimensions

|             | Width x Length |                |
|-------------|----------------|----------------|
| Twin-Single | 38 x 74 ½"     | 96.5 x 189 cm  |
| Double-Full | 53 x 74 ½"     | 134.5 x 189 cm |
| Queen       | 60 x 79 ½"     | 152.5 x 202 cm |
| King        | 76 x 79 ½"     | 193 x 202 cm   |

**Mattress type** - Coil + High Density Foam **Sizes** - Single-Twin, Double-Full, Queen **Thickness** - 8 inch

**Warranty** -Enjoy peace of mind with a generous 5-year manufacturer's limited warranty, a testament to the mattress's exceptional quality and durability. **Packaging** - Your mattress will be securely packaged in a box, ensuring its safe arrival and convenience. Enjoy peace of mind with a generous 5-year manufacturer's limited warranty, a testament to the mattress's exceptional quality and durability. **Shipping** - We are pleased to offer standard shipping from Vancouver to all Canadian provinces, making it accessible to customers nationwide. **Delivery** -Your order will be delivered within 2 to 5 days, depending on your location. We are committed to ensuring that you receive your Hybrid Plush Mattress swiftly and hassle-free.

The Hybrid Plush Mattress is not just a mattress; it's a gateway to a world of unparalleled sleep quality. With our mattress, you're investing in your well-being, ensuring restful nights and rejuvenated mornings. Experience the difference that premium materials and expert craftsmanship can make in your sleep routine. Our mattress is designed to offer:

1. Optimal Support: Thanks to the 7.5 firmness rating, our Hybrid Plush Mattress provides a balanced blend of support and comfort. This medium-firm mattress is perfect for individuals seeking a mattress that caters to their specific sleep preferences.
2. Durability: With a 5-year warranty, you can trust that your investment in our Hybrid Plush Mattress is protected. It's built to stand the test of time, ensuring lasting comfort and quality.
3. Convenience: The mattress is available in various sizes, including Single-Twin, Double-Full, and Queen, ensuring that it's suitable for various bed frames and room sizes.
4. Easy Setup: Our mattress arrives securely packaged in a box, making setup a breeze. You'll have your new mattress in place in no time.
5. Fast Delivery: We understand that quality sleep can't wait. Our swift 2 to 5-day delivery ensures that you can start enjoying the benefits of the Hybrid Plush Mattress without delay.

At Furniture Garage Store, we're committed to providing the best sleep solutions for our customers. If you're in search of a high-quality mattress that promises both longevity and luxurious comfort, your quest ends here. Explore the world of blissful sleep and quality bedding at [\[shapesmattress.com\]](#). Enhance your sleep, enhance your life, and discover the difference a Hybrid Plush Mattress can make.



# Box spring - Single-Double-Queen-King

[Read More](#)

**SKU:** 1700004210  
**Price:** \$119.00 - \$199.00  
**Stock:** instock  
**Categories:** [All products](#), [Base](#), [Local-Handmade mattress](#)  
**Tags:** [adon](#), [base](#), [bed](#), [box](#), [box spring](#), [double](#), [king](#), [legs](#), [mattress](#), [metal frame](#), [queen](#), [single](#), [spring](#)

## Product Description

### Description

- Strong and Steady build box spring with choice to add legs on to make it more stable and give more height eliminating the need of bed frames entirely
- Made in Canada
- Pre-assembled
- Sizes available-single,double,queen,king ( inquire via email for custom sizes)

### Height - 7 inch

#### Dimintions

|             |            |                |                                   |
|-------------|------------|----------------|-----------------------------------|
| Twin/Single |            | 38 x 74 ½"     | 96.5 x 189 cm                     |
| Double/Full | 53 x 74 ½" | 134.5 x 189 cm | Also known as "Standard"          |
| Queen       | 60 x 79 ½" |                | 152.5 x 202 cm                    |
| King        | 76 x 79 ½" | 193 x 202 cm   | Standard Canadian & American King |



# Box spring bed frame - Add LEGS- single-double-queen-king

[Read More](#)

**SKU:** 1700006095  
**Price:** \$119.00 - \$269.00  
**Stock:** instock  
**Categories:** [All products](#), [Base](#), [Bed Frames](#), [Local-Handmade mattress](#)  
**Tags:** [adon](#), [base](#), [bed](#), [box](#), [box spring](#), [double](#), [king](#), [legs](#), [mattress](#), [metal frame](#), [queen](#), [single](#), [spring](#)

## Product Description

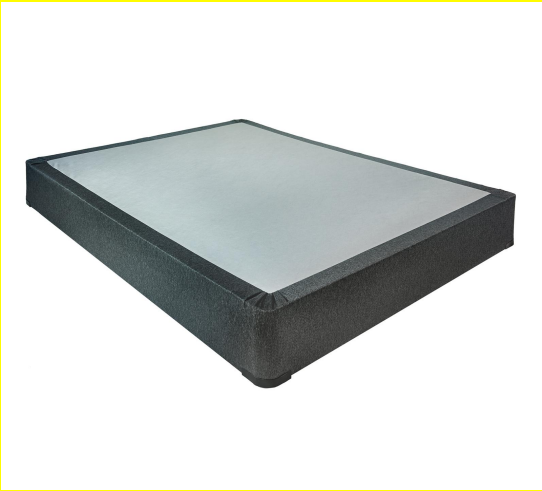
### Description

- Strong and Steady build box spring with choice to add legs on to make it more stable and give more height eliminating the need of bed frames entirely
- Made in Canada
- Pre-assembled

- Sizes available-single,double,queen,king ( inquire via email for custom sizes)

**Height with legs add on -14 inch    Height without legs add on - 7 inch    Dimentions**

|             |            |                |                                   |
|-------------|------------|----------------|-----------------------------------|
| Twin/Single |            | 38 x 74 ½"     | 96.5 x 189 cm                     |
| Double/Full | 53 x 74 ½  | 134.5 x 189 cm | Also known as "Standard"          |
| Queen       | 60 x 79 ½" |                | 152.5 x 202 cm                    |
| King        | 76 x 79 ½" | 193 x 202 cm   | Standard Canadian & American King |



# Box spring - Single-Double-Queen-King

[Read More](#)

**SKU:** 1700004765  
**Price:** \$119.00 - \$199.00  
**Stock:** instock

**Categories:** [All products](#), [Bed Frames](#), [Bed Room](#), [Mattress adon](#), [base](#), [bed](#), [box](#), [box spring](#), [double](#), [king](#), [legs](#), [mattress](#), [metal frame](#), [queen](#), [single](#), [spring](#)

## Product Description

### Description

- Strong and Steady build box spring with choice to add legs on to make it more stable and give more height eliminating the need of bed frames entirely
- Made in Canada
- Pre-assembled
- Sizes available-single,double,queen,king ( inquire via email for custom sizes)

**Height - 7 inch**  
**Dimentions**

|             |            |                |                                   |
|-------------|------------|----------------|-----------------------------------|
| Twin/Single |            | 38 x 74 ½"     | 96.5 x 189 cm                     |
| Double/Full | 53 x 74 ½  | 134.5 x 189 cm | Also known as "Standard"          |
| Queen       | 60 x 79 ½" |                | 152.5 x 202 cm                    |
| King        | 76 x 79 ½" | 193 x 202 cm   | Standard Canadian & American King |



# Box spring bed frame - Add LEGS- single-double-queen-king

[Read More](#)

**SKU:** 1700003626  
**Price:** \$119.00 - \$269.00  
**Stock:** instock

**Categories:** [All products](#), [Base](#), [Bed Frames](#), [Bed Room](#), [Mattress adon](#), [base](#), [bed](#), [box](#), [box spring](#), [double](#), [king](#), [legs](#), [mattress](#), [metal frame](#), [queen](#), [single](#), [spring](#)

Product Description

Description

- Strong and Steady build box spring with choice to add legs on to make it more stable and give more height eliminating the need of bed frames entirely
- Made in Canada
- Pre-assembled
- Sizes available-single,double,queen,king ( inquire via email for custom sizes)

Height with legs add on -14 inch    Height without legs add on - 7 inch    Dimentions

|             |            |                |                                   |
|-------------|------------|----------------|-----------------------------------|
| Twin/Single |            | 38 x 74 ½"     | 96.5 x 189 cm                     |
| Double/Full | 53 x 74 ½" | 134.5 x 189 cm | Also known as "Standard"          |
| Queen       | 60 x 79 ½" |                | 152.5 x 202 cm                    |
| King        | 76 x 79 ½" | 193 x 202 cm   | Standard Canadian & American King |